



# SERVICE INTERPHONE PANEL ASSEMBLY, M1120

## PART NUMBER 233T7216-1

COMPONENT MAINTENANCE MANUAL  
WITH  
ILLUSTRATED PARTS LIST

### 23-41-10

TITLE PAGE

Page 1

Mar 01/01

01

L82155



REVISION RECORD

- Retain this record in front of manual. On receipt of revision, insert revised pages in the manual, and enter revision number, date inserted and initial.

REVISION NUMBER	REVISION DATE	DATE FILED	BY	REVISION NUMBER	REVISION DATE	DATE FILED	BY

**23-41-10**

REVISION RECORD

01

Page 1

Mar 01/01



TEMPORARY REVISION AND SERVICE BULLETIN RECORD

BOEING SERVICE BULLETIN	BOEING TEMPORARY REVISION	OTHER DIRECTIVE	DATE OF INCORPORATION INTO MANUAL


**BOEING**  
 COMPONENT  
 MAINTENANCE MANUAL

PAGE	DATE	CODE	PAGE	DATE	CODE	CONT.
23-41-10			ILLUSTRATED PARTS LIST			
TITLE PAGE			1006	MAR 01/01	01	
1	MAR 01/01	01	1007	MAR 01/01	01	
2	BLANK		1008	BLANK		
REVISION RECORD						
1	MAR 01/01	01				
2	BLANK					
TR & SB RECORD						
1	MAR 01/01	01				
2	BLANK					
LIST OF EFFECTIVE PAGES						
1	MAR 01/01	01				
THRU LAST PAGE						
CONTENTS						
1	MAR 01/01	01				
2	BLANK					
INTRODUCTION						
1	MAR 01/01	01				
2	BLANK					
DESCRIPTION & OPERATION						
1	MAR 01/01	01				
2	BLANK					
TESTING & TROUBLE SHOOTING						
101	MAR 01/01	01				
102	BLANK					
103	MAR 01/01	01				
104	BLANK					
ILLUSTRATED PARTS LIST						
1001	MAR 01/01	01				
1002	MAR 01/01	01				
1003	MAR 01/01	01				
1004	MAR 01/01	01				
1005	BLANK					

\* = REVISED, ADDED OR DELETED

# 23-41-10

EFFECTIVE PAGES  
 LAST PAGE Page 1  
 01 Mar 01/01

TABLE OF CONTENTS

<u>Paragraph Title</u>	<u>Page</u>
Description and Operation . . . . .	1
Testing and Trouble Shooting. . . . .	101
Disassembly . . . . .	.*[1]
Cleaning. . . . .	.*[1]
Check . . . . .	.*[1]
Repair. . . . .	.*[1]
Assembly. . . . .	.*[1]
Fits and Clearances (not applicable)	
Special Tools . . . . .	.*[2]
Illustrated Parts List. . . . .	1001

\*[1] Use applicable procedures in 20-11-04 and standard industry practices.

\*[2] Special instructions not required.

# 23-41-10

CONTENTS

01

Page 1

Mar 01/01



## INTRODUCTION

The instructions in this manual provide the information necessary to perform maintenance functions including test, fault isolation, and replacement of defective components.

This manual is divided into separate sections:

- |  |                              |
|--|------------------------------|
| 1. Title Page                                      | 4. List of Effective Pages   |
| 2. Record of Revisions                             | 5. Table of Contents         |
| 3. Temporary Revision &<br>Service Bulletin Record | 6. Introduction              |
|  | 7. Procedures & IPL Sections |

Refer to the Table of Contents for the page location of applicable sections.

An explanation of the use of the Illustrated Parts List is provided in the Introduction to that section.

All weights and measurements used in the manual are in English units, unless otherwise stated. When metric equivalents are given they will be in parentheses following the English units.

Design changes, optional parts, configuration differences and Service Bulletin modifications create alternate part numbers. These are identified in the Illustrated Parts List (IPL) by adding an alphabetical character to the basic item number. The resulting item number is called an alpha-variant. Throughout the manual, IPL basic item number references also apply to alpha-variants unless otherwise indicated.

Verification:

Testing/TS

# 23-41-10

INTRODUCTION

01

Page 1

Mar 01/01



THE SERVICE INTERPHONE PANEL ASSEMBLY, M1120

DESCRIPTION AND OPERATION

CAUTION: THIS ASSEMBLY CONTAINS THE COMPONENTS, WHICH CAN BE DAMAGED BY ELECTROSTATIC DISCHARGE DURING HANDLING. REFER TO THE PROCEDURES SHOWN IN SOPM 20-12-02 (HANDLING PROCEDURES FOR ELECTROSTATIC SENSITIVE DEVICES).

1. Description

- A. The Service Interphone Panel Assembly contains one switch and one connector.

23-41-10

DESCRIPTION & OPERATION

01

Page 1

Mar 01/01

TESTING AND TROUBLE SHOOTING

1. Test Equipment

- A. Multimeter: Simpson 260P or equivalent
- B. Connector: BACC45FT12-12S6, or Boeing breakout box A33003-2 with cable A33003-167.

2. Functional Test

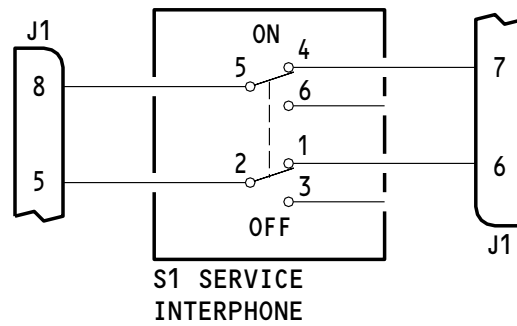
NOTE: Continuity is defined as 3 ohms max, and open is defined as 900K ohms min.

- A. Do the functional test as shown in Table 101.

STEP NUMBER	TEST PROCEDURE	REQUIRED RESULTS	SUSPECTED COMPONENTS
1	<u>Functional Test for 233T7216-1</u>		
	Connect module to test connectors.		
2	Set switch S1 to OFF position.		
	Measure continuity between each of the following points:		
3	(+) (-)		
	J1-7 J1-8 J1-5 J1-6	Open Open	J1,S1 J1,S1
3	Set switch S1 to ON position.		
	J1-7 J1-8 J1-5 J1-6	Continuity Continuity	J1,S1 J1,S1
	Remove all connections.		

233T7216-1  
Functional Test  
Table 101





233T7216-1  
Service Interphone Panel Assembly Schematic Diagram  
Figure 101

**23-41-10**

TESTING & TROUBLE SHOOTING  
01 Page 103  
Mar 01/01

ILLUSTRATED PARTS LIST

1. This section lists and illustrates replaceable or repairable component parts. The Illustrated Parts Catalog contains a complete explanation of the Boeing part numbering system.

2. Indentures show parts relationships as follows:

Assembly

Detail Parts for Assembly

Subassembly

Attaching Parts for Subassembly

Detail Parts for Subassembly

Detail Installation Parts (Included only if installation parts may be returned to shop as part of assembly)

3. One use code letter (A, B, C, etc.) is assigned in the EFF CODE column for each variation of top assembly. All listed parts are used on all top assemblies except when limitations are shown by use code letter opposite individual part entries.

4. Letter suffixes (alpha-variants) are added to item numbers for optional parts, Service Bulletin modification parts, configuration differences (Except left- and right-hand parts), product improvement parts, and parts added between two sequential item numbers. The alpha-variant is not shown on illustrations when appearance and location of all variants of the part is the same.

5. Service Bulletin modifications are shown by the notations PRE SB XXXX and POST SB XXXX.

A. When a new top assembly part number is assigned by Service Bulletin, the notations appear at the top assembly level only. The configuration differences at detail part level are then shown by use code letter.

B. When the top assembly part number is not changed by the Service Bulletin, the notations appear at the detail part level.

6. Parts Interchangeability

Optional  
(OPT)

The parts are optional to and interchangeable with other parts having the same item number.

Supersedes, Superseded By  
(SUPSDS, SUPSD BY)

The part supersedes and is not interchangeable with the original part.

Replaces, Replaced By  
(REPLS, REPLD BY)

The part replaces and is interchangeable with, or is an alternate to, the original part.

**23-41-10**

ILLUSTRATED PARTS LIST

01 Page 1001

Mar 01/01

VENDORS

- 08524 DEUTSCH FASTENER CORP SEE CODE V97928
- 15653 FAIRCHILD FASTENERS KAYNAR PRODUCTS DIV  
800 S STATE COLLEGE BLVD  
FULLERTON, CALIFORNIA 92831-3001  
FORMERLY VK6405 MICRODOT AEROSP LTD; FORMERLY KAYNAR TECH  
KAYNAR DIV
- 60119 MONADNOCK CO THE  
18301 ARENTH AVENUE PO BOX 1222  
CITY OF INDUSTRY, CALIFORNIA 91749  
FORMERLY UNITED CARR FASTENER CORP VB0051 VB0056 VB0076  
FORMERLY TRW ELECTRONIC COMPONENTS CINCH-MONADNOCK DIV  
FORMERLY CINCH-MONADNOCK DIV OF TRW INC V76530
- 72962 HARVARD INDUSTRIES INC  
3 WERNER WAY SUITE 210  
LEBANON, NEW JERSEY 08833  
FORMERLY AMERACE CORP ESNA DIV  
FORMERLY ELASTIC STOP NUT IN UNION, NJ

23-41-10

ILLUSTRATED PARTS LIST  
01 Page 1002  
Mar 01/01

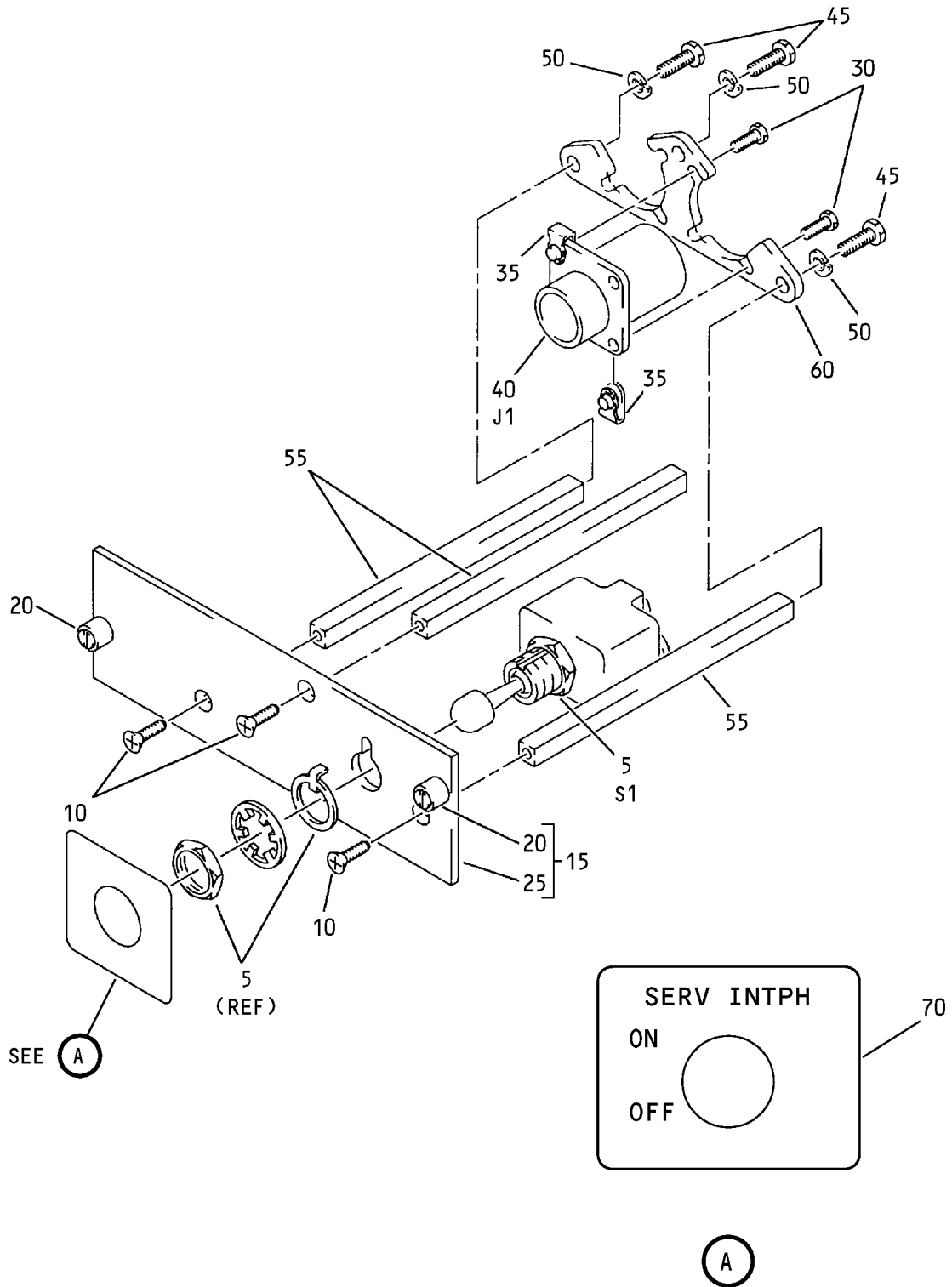
REFERENCE DESIGNATOR INDEX (SEE SCHEMATIC DIAGRAM)		
REFERENCE DESIGNATOR	PART NUMBER	FIG-ITEM
J1 S1	BACC45FN12-12P6 MS24524-23	1-40 5

**23-41-10**ILLUSTRATED PARTS LIST  
01 Page 1003  
Mar 01/01

PART NUMBER	AIRLINE PART NO.	FIG.	ITEM	TTL REQ
BACC45FN12-12P6		1	40	1
BACN10NW1		1	35	2
BACP10U0150N		1	25	1
BACS12CB04-5		1	30	2
BACS12CB06-5		1	45	3
BACS21DD1B		1	20	2
DBMB1400-6A1		1	20	2
K19798-04		1	35	2
MS24524-23		1	5	1
MS35338-41		1	50	3
NAS514P632-5		1	10	3
RMA4812-160-40		1	35	2
233T6200-65		1	60	1
233T7216-1		1	1A	RF
233T7216-2		1	15	1
233T7216-3		1	65	1
293162		1	35	2
69B46200-8		1	55	3

# 23-41-10

 ILLUSTRATED PARTS LIST  
 01 Page 1004  
 Mar 01/01



Service Interphone Panel Assembly  
 Figure 1

**23-41-10**

ILLUSTRATED PARTS LIST  
 01 Page 1006  
 Mar 01/01


**BOEING**  
 COMPONENT  
 MAINTENANCE MANUAL

FIG. & ITEM	PART NO.	AIRLINE PART NUMBER	NOMENCLATURE 1234567	EFF CODE	QTY PER ASSY
01- -1A	233T7216-1		PANEL ASSY-SERVICE INTPH, (M1120)		RF
5	MS24524-23		.SWITCH-TG (S1)		1
10	NAS514P632-5		.SCREW		3
15	233T7216-2		.BASEPLATE ASSY		1
20	DBMB1400-6A1		..STUD ASSY- (V08524) (SPEC BACS21DD1B)		2
25	BACP10U0150N		..PANEL		1
30	BACS12CB04-5		.SCREW		2
35	K19798-04		.NUT- (V15653) (SPEC BACN10NW1) (OPT RMA4812-160-40 (V72962)) (OPT 293162 (V60119))		2
40	BACC45FN12-12P6		.CONNECTOR- (J1)		1
45	BACS12CB06-5		.SCREW		3
50	MS35338-41		.WASHER		3
55	69B46200-8		.STANDOFF		3
60	233T6200-65		.BRACKET-SPRT		1
-65	233T7216-3		.WIRE BUNDLE ASSY BOEING LETTER HISTORY		1

- Item Not Illustrated

# 23-41-10

ILLUSTRATED PARTS LIST

01

Page 1007

Mar 01/01